

# CARTOGRAPH

storm water version

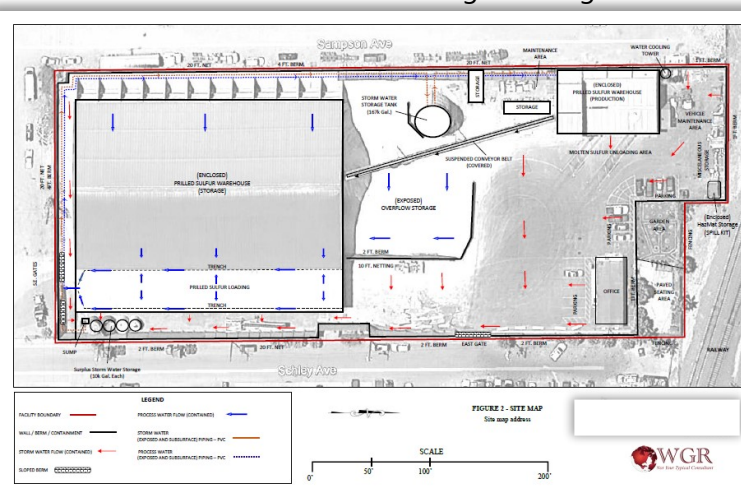
Remember the scene in Disney's National Treasure where Ben Gates (the protagonist played by Nicholas Cage), finds an inscription on the stem of an old pipe which leads him to believe there is a secret map on the back of the Declaration of Independence? When discussing his theory with Abigail Chase of the document preservation department, Ben describes his theory in words that make the process seem more complicated than it actually is. ([Click here to watch that scene.](#)) Have you ever felt that way about site maps? That the end product seems simple, yet the requirements and creative process are so confusing? If you've ever felt this way about storm water cartography then this edition of **The Rain Events** is for you!

Creating a site map for your facilities' SWPPP may seem overwhelming and intimidating at first, but rather, consider this a chance to display your dazzling creativity! There are some requirements that are to be included in each map, but overall, the design and layout is left to the imagination and creativity of the map-maker. According to the Industrial General Permit, "the dischargers shall prepare a site map that includes notes, legends, a north arrow, and other data as appropriate to ensure the map is clear, legible, and understandable." In other words, the first step of creating a site map is to make it readable. Ever encountered a road map that you couldn't figure out? Well, site maps are meant to be easy to read and understand. Sometimes the best way to make the site map readable is to make more than one map. So often the map can become

overcrowded with information and notes, and one of the simplest ways to change the readability of the map is to create several maps that call out different things as required by the permit. Do not fear, the IGP allows multiple site maps! Before diving into the nitty-gritty information of what is required on the site map itself, let's review some helpful and practical tips for creating a readable and clean

looking site map which will not only be understandable but easy to format:

- ✿ Use Google Earth as a tool to capture a satellite image of your facility. While drawings can be clean and tidy, a satellite-image gives the viewer a real sense of the site layout and helps them visualize what is actually happening. Using Google Earth is especially helpful when it comes to scaling the image.



- ✿ Depending on your creative style, it sometimes works best to color the satellite image as black & white so that all the layers and areas of the map can be called out in color without the map getting too busy.

- ✿ Don't be afraid to use bright colors and outlines to call out the different requirements given by the permit. The brightly colored

lines and boxes make things easy to find. *Hint: If you want to have the map be monochromatic, use textures in the outlined areas to distinguish the different selections.*

- ✿ Create a legend on the side of the map which details the shaded and outlined areas. *Hint: It looks really professional to have a black line bordering the legend area!*

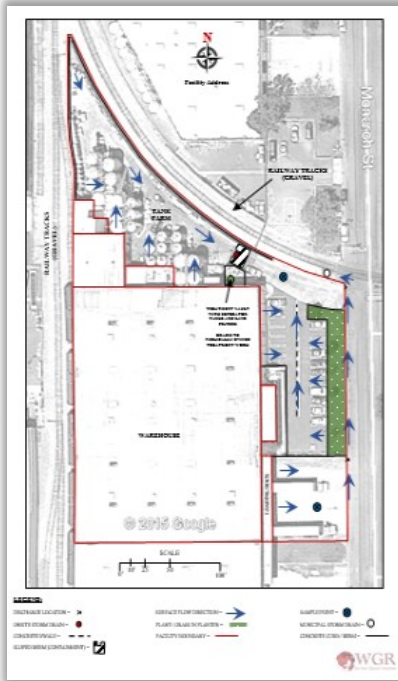
- ✿ Have fun! Let your inner artist create a usable and

beautiful map.

Since we've covered some of the tips for creating a map practically, let's cover the requirements given by the Industrial General Permit for what must be included on the map. Think of the map as your facility in a nutshell – a clear and concise description of what and where your facility is, a definition of what you do and where on your facility you do it, a visible storm water chart showing where storm water enters and exits your facility, and a list of all potentially hazardous items. So, what does the permit require to be listed on a site map?

**The map needs to include:**

- ☑ "The facility boundary, storm water drainage areas within the facility boundary, and portions of any drainage areas impacted by discharges from surrounding areas. Include the flow direction of each drainage area, on-facility surface water bodies, areas of soil erosion, and location (s) of nearby water bodies (such as rivers, lakes, wetlands, etc.) or municipal storm drain inlets that may receive the facility's industrial storm water discharges and authorized NSWDS;
- ☑ Locations of storm water collection and conveyance systems, associated discharge locations, and direction of flow. Include any sample locations if different than the identified discharge locations;
- ☑ Locations and descriptions of structural control measures that affect industrial storm water discharges, authorized NSWDS, and/or run-on;
- ☑ Identification of all impervious areas of the facility, including paved areas, buildings, covered storage areas, or other roofed structures;
- ☑ Locations where materials are directly exposed to precipitation and the locations where identified significant spills or leaks have occurred; and
- ☑ Areas of industrial activity subject to the General Permit. Identify all industrial storage areas and storage tanks, shipping and receiving areas, fueling areas, vehicle and equipment storage/maintenance areas, material handling and processing areas, waste treatment and disposal areas, dust or particulate generating areas, cleaning and material reuse areas, and other areas of industrial activity that may have potential pollutant sources."



For additional requirements for creating a site map, see [Attachment D of the Industrial General Permit](#).

Don't be intimidated by these lists of requirements, rather, view them as



your guide and checklist for creating a map. If you follow these two lists of requirements, you are well on your way to creating a readable and compliant site map. If you get lost in all the details, be sure and take a step back and get the big picture before diving back into your new found cartographic skills.

**"To Do List" for June**

- ☁ Perform the June monthly inspection
- ☁ If your facility is moving into Level 1 status, begin the Level 1 process now—see Section XII.C in the Industrial General Permit for a list of things to do for Level 1. You will need to perform a Level 1 evaluation (assisted by a QISP) by October 1st of this year. Don't wait until the last minute.
- ☁ Complete your facility's annual report and submit via SMARTS by July 15.

**Still Confused ???**

Here's a short video on how to put together your own industrial SWPPP map. It is from our Industrial SWPPP Writing Course on FORGE. To access the entire course [click here](#) and use coupon code IGP2019 to get a 20% discount on the subscription rate.



**Save The Date:**  
**Storm Water Awareness Week**  
**September 23-27, 2019**

Do you follow us on social media?  
Find out what we're up to on  
[Facebook](#) or [Instagram!](#)



Instagram



**Please contact us if you have any questions ...**

**The Rain Events**

Newsletter Editor: **John Teravskis**  
QSD/QSP, QISP, CPESC, ToR, IGPTT  
Participant  
jteravskis@wgr-sw.com  
(209) 334-5363 ext. 110 or (209) 649-0877

**Technical Questions about Environmental Compliance?**

Call ...  
**Aaron Ortiz**, QISP, ToR, [aortiz@wgr-sw.com](mailto:aortiz@wgr-sw.com)  
(209) 334-5363 ext. 114  
**Chelsea Dreyer**, QISP, [cdreyer@wgr-sw.com](mailto:cdreyer@wgr-sw.com)  
(562) 799-8510 ext. 1003



SEPTEMBER 23-27, 2019



# SAVE THE DATE

STORM WATER AWARENESS WEEK

## Stay Cool with Cool Summer Savings by WGR



**15% Off Industrial SWPPP Preparation Quote**

Contact [aortiz@wgr-sw.com](mailto:aortiz@wgr-sw.com) for a quote.

**Must redeem by August 30, 2019**

Not valid with any other discount. New WGR clients and facilities only.

**\$150 SWPPP Map Evaluation**

Contact [aortiz@wgr-sw.com](mailto:aortiz@wgr-sw.com) to schedule

**Must redeem by August 30, 2019**

Price is per map. Site visit not included.

Price includes a written evaluation of the map's compliance with the IGP and recommendations for improvements of the map.

**20% Off the FORGE All-Access Pass Annual Subscription**

**For Online Storm Water Training and PDHs**

**Use Coupon Code THEKEY**

**Go to:**

<https://secure.wgr-sw.com/training/membership/forge-gold/>



# Storm Water Contest...

Each month, we invite our readers to participate in a contest to test their knowledge of the Industrial General Permit and their storm water compliance program. We enter all submittals to our monthly newsletter question into a drawing, and one person is selected at random to receive a \$25 gift card. Last Month's question was:

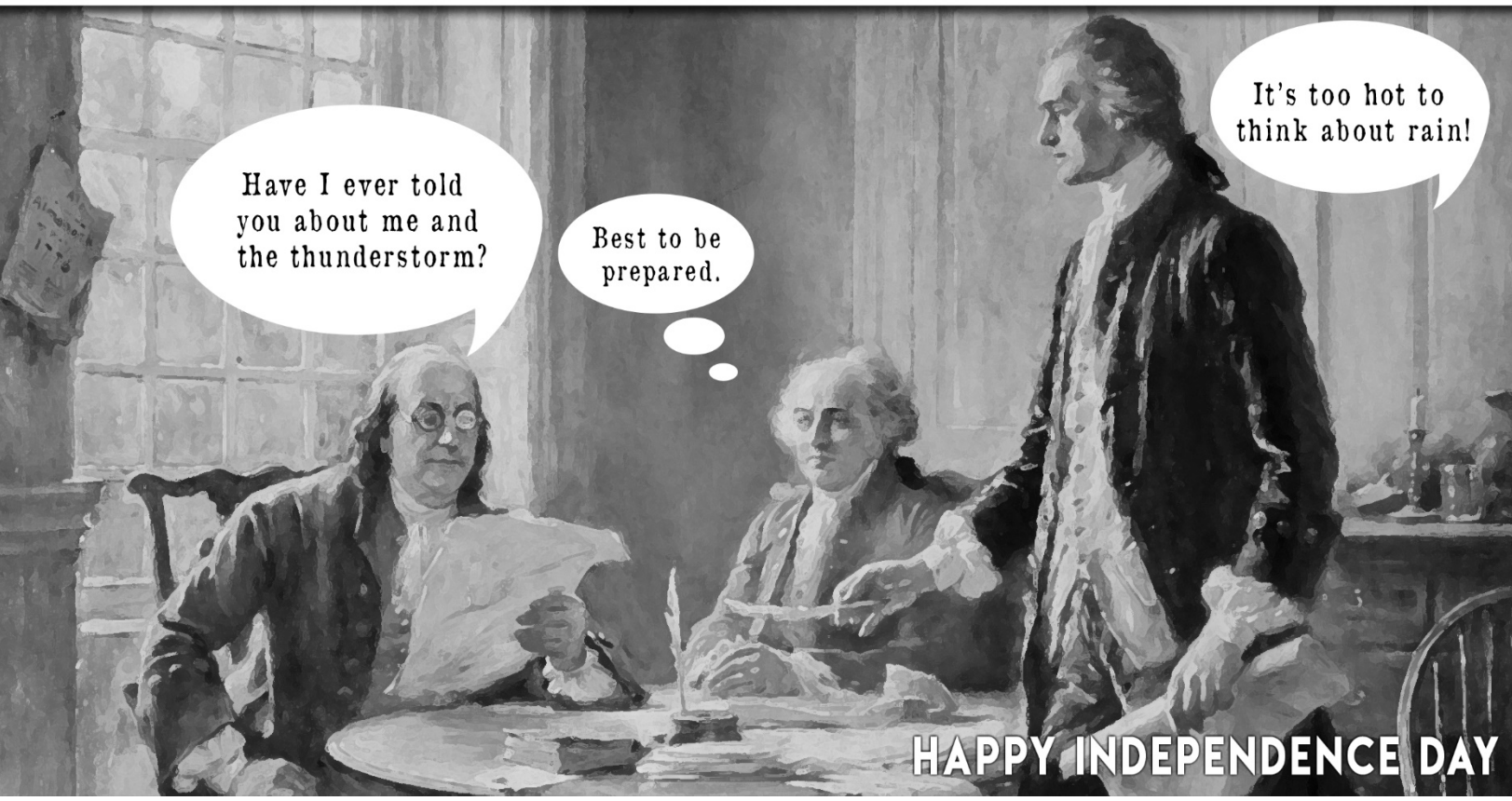
## WHAT SHOULD YOU DO IF YOUR DUMPSTER IS LEAKING?

Congratulations Beth Edwards, you won! She replied: "Refer to the 'Spill and Leak Prevention Response' section of your SWPPP, where there are instructions for use of your spill kit to first contain and clean up the leak, then apply absorbent material over any liquids remaining in the dumpster to prevent further leaking, and your SWPPP will also have the phone number to report a defective dumpster to your waste management contractor for a replacement." Beth wins a \$25 gift card to Baskin Robbins for a nice treat for a hot summer day!

## This Month's Contest Question:

**WHAT IS THE MINIMUM NUMBER OF MAPS NEEDED IN THE SWPPP?**

Submit your answers by Friday, July 12th. Email your answer to [jteravskis@wgr-sw.com](mailto:jteravskis@wgr-sw.com). One winner will be selected by a random drawing to receive a \$25 gift card to Baskin Robbins.



Have I ever told you about me and the thunderstorm?

Best to be prepared.

It's too hot to think about rain!

**HAPPY INDEPENDENCE DAY**



**THE  
GREEN  
SOXX  
ARE  
IN  
STOCK.**

**ORDER ONLINE.  
LOCAL PICKUP.  
SHOP.BMPOUTLET.COM**



**filtr<sup>re</sup>xx<sup>®</sup>**

**\$395**

**8-INCH. 18 SECTIONS. 1 PALLET.**



you on FB?

Yeah

Insta?

For sure.

Let's connect.



@wgrsw



@wgr\_sw